

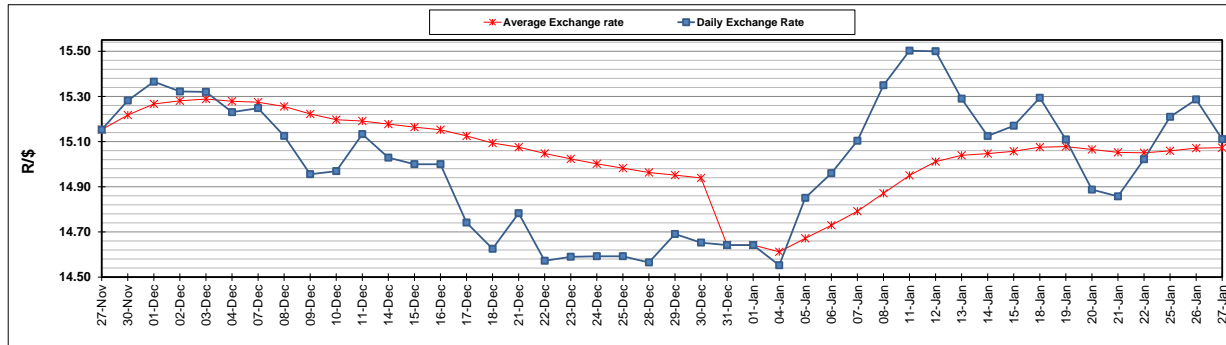
	PETROL 95 ULP	PETROL 93 ULP & LRP	DIESEL 0.05%	DIESEL 0.005%	ILL. PAR.
GAUTENG PUMP PRICE (SA c/l) AS FROM 06/01/2021	1,486.000	1,469.000	-	-	-
WHOLESALE PRICE (SA c/l) AS FROM 06/01/2021	-	-	1,300.420	1,301.820	739.688
SINGLE NATIONAL MAXIMUM RETAIL PRICE	-	-	-	-	930.000
BASIC FUEL PRICE - 27/01/2021 (SA c/l)	610.050	603.454	600.046	604.356	581.396
PRESS RELEASE CONTRIBUTION TO BFP 06/01/2021 - 27/01/2021 (SA c/l)	519.170	512.170	541.630	543.030	527.128
UNIT OVER/(UNDER) RECOVERY - 27/01/2021 (SA c/l)	(90.880)	(91.284)	(58.416)	(61.326)	(54.268)
AVERAGE BASIC FUEL PRICE 31/12/2020 - 27/01/2021	592.450	585.437	588.716	590.954	575.654
AVERAGE UNIT OVER/(UNDER) RECOVERY 31/12/2020 - 27/01/2021	(81.280)	(81.867)	(58.086)	(58.724)	(59.526)

ANALYSIS MOVEMENT OF AVERAGE OVER/(UNDER) RECOVERY

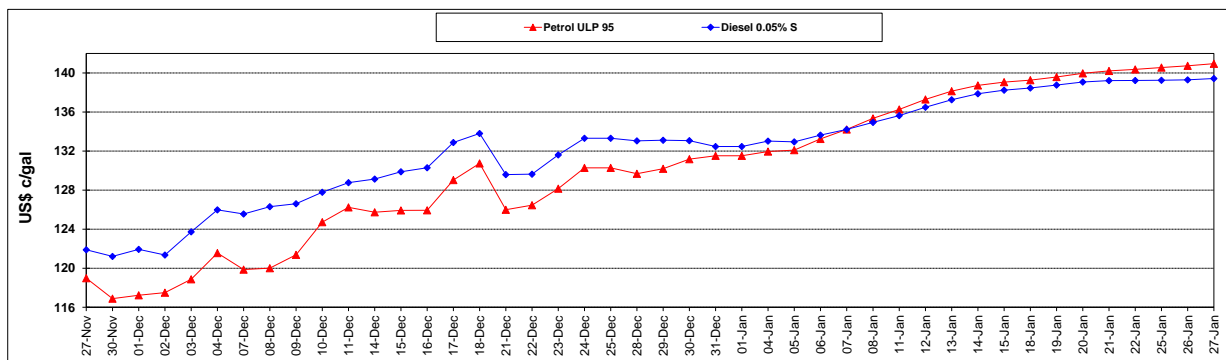
	PETROL 95	PETROL 93	DIESEL 0.05%	DIESEL 0.005%	ILL. PAR.
- MOVEMENT IN INTERNATIONAL PRODUCT PRICES	(76.009)	(76.659)	(52.848)	(53.467)	(54.405)
- MOVEMENT IN EXCHANGE RATE	(5.271)	(5.208)	(5.238)	(5.257)	(5.121)
AVERAGE UNIT OVER/(UNDER) RECOVERY 31/12/2020 - 27/01/2021	(81.280)	(81.867)	(58.086)	(58.724)	(59.526)

R/\$ EXCHANGE RATE - (R/\$15.1108 - 27/01/2021)

EXCHANGE RATE USED IN BASIC FUEL PRICE



INTERNATIONAL PRODUCT PRICES OF BASKET USED IN BASIC FUEL PRICE



BASIC FUEL PRICE IN SA CENTS PER LITRE

